



Go green with **Best Environmental Management Practices**

The **EMAS Sectoral Reference Documents** for the Waste Management Sector

Presentation at the Conference
**Separate Waste Collection in the Context
of a Circular Economy in Europe**

Brussels, 29 January 2016

Paolo Canfora

European Commission – Joint Research Centre

GO GREEN WITH **BEST ENVIRONMENTAL MANAGEMENT PRACTICES!**

Content of this presentation

What is EMAS?

The EMAS Sectoral Reference Documents and the Best Environmental Management Practices

The Best Environmental Management Practices for the Waste Management Sector

Two examples

EMAS



EMAS Performance, Credibility, Transparency

What is EMAS?

An Environmental Management System?

An EU Regulation?

An environmental performance reporting tool?

EMAS



EMAS Performance, Credibility, Transparency

What is EMAS?

EU Eco-Management and Audit Scheme



An Environmental Management System?



An EU Regulation?



An environmental performance reporting tool?

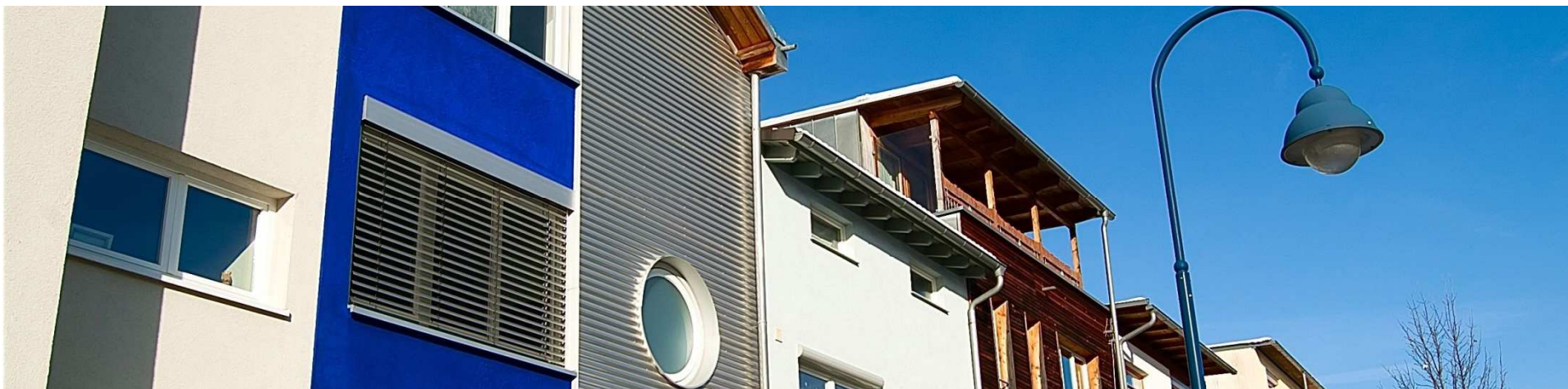


European
Commission

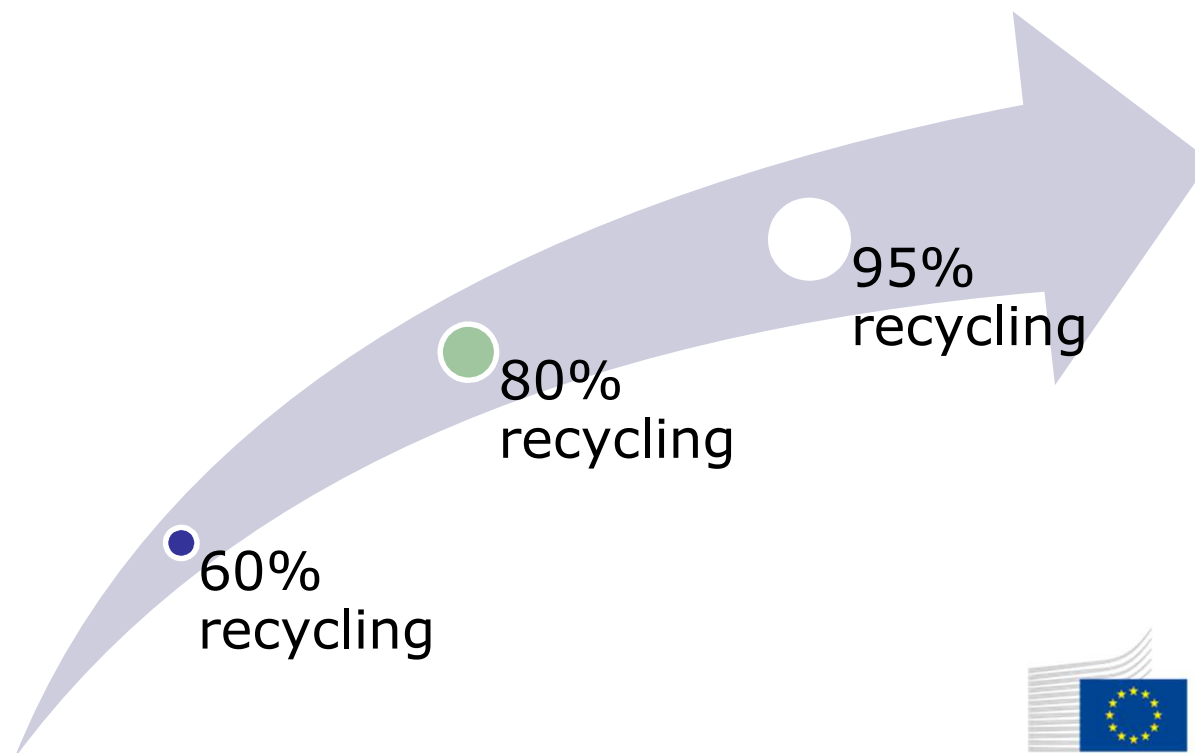


EMAS is a commitment to...



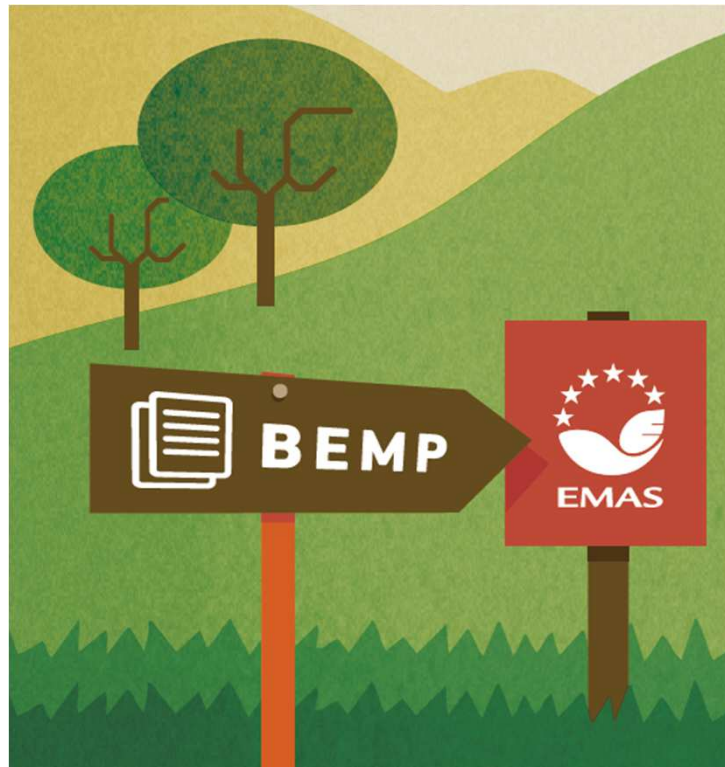


... in environmental performance





Continuous improvement seems challenging?



**Best
Environmental
Management
Practices**
can help

GO GREEN WITH **BEST ENVIRONMENTAL MANAGEMENT PRACTICES!**



**Best practices to reduce
environmental impacts**

Already in Use by Best Environmental Performers



**Practical
Guidance**



**Environmental
Performance
Indicators**



**Benchmarks
of Excellence**

A sectoral approach



**European
Commission**



The 'frontrunners approach'





The 'frontrunners approach'

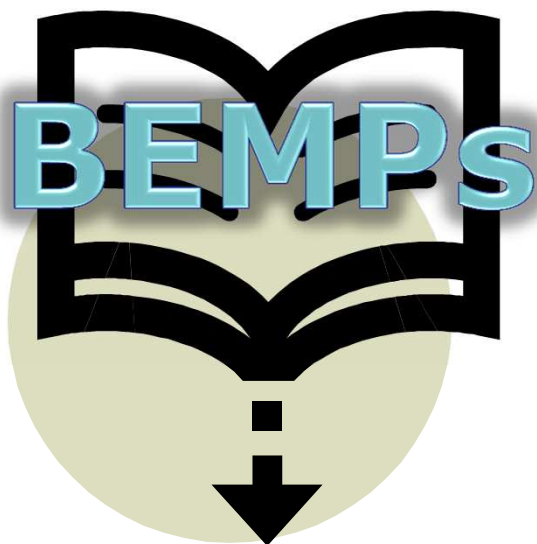


European
Commission



The 'frontrunners approach'





**Best practice
guidance
documents
publicly
available
on-line**

Detailed
information on
how to
implement the
best practices



Adopted by
the European
Commission
as
**EMAS
Sectoral
Reference
Documents**

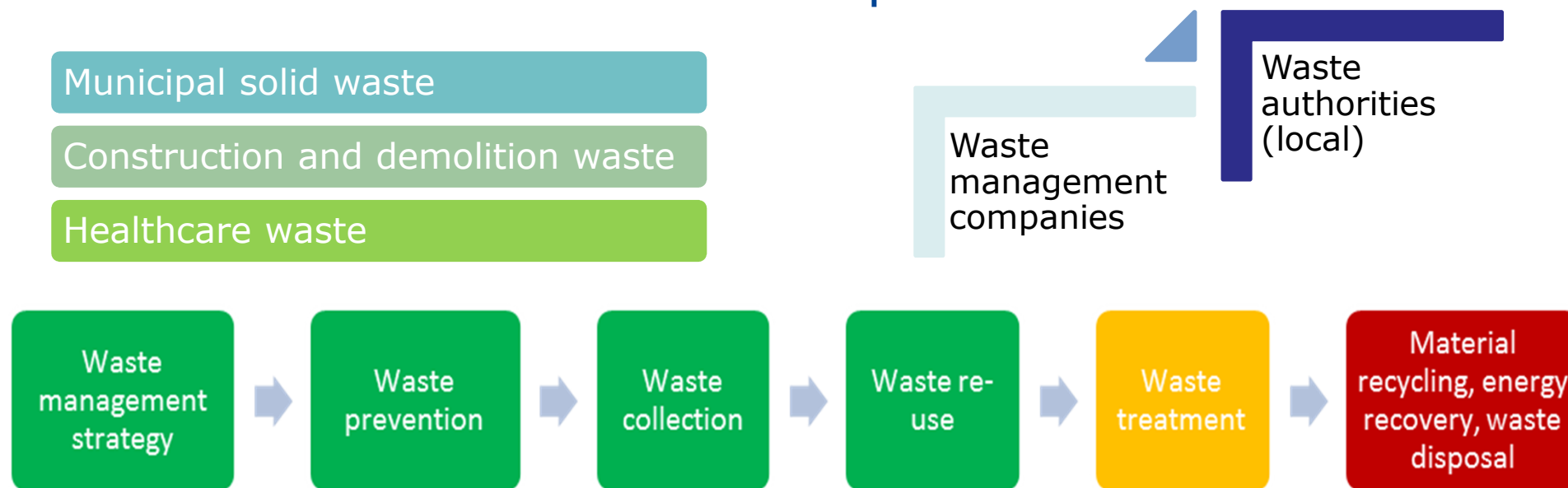
Concise
description of
all the best
practices

Available in all
EU languages



BEMPs for the Waste Management Sector

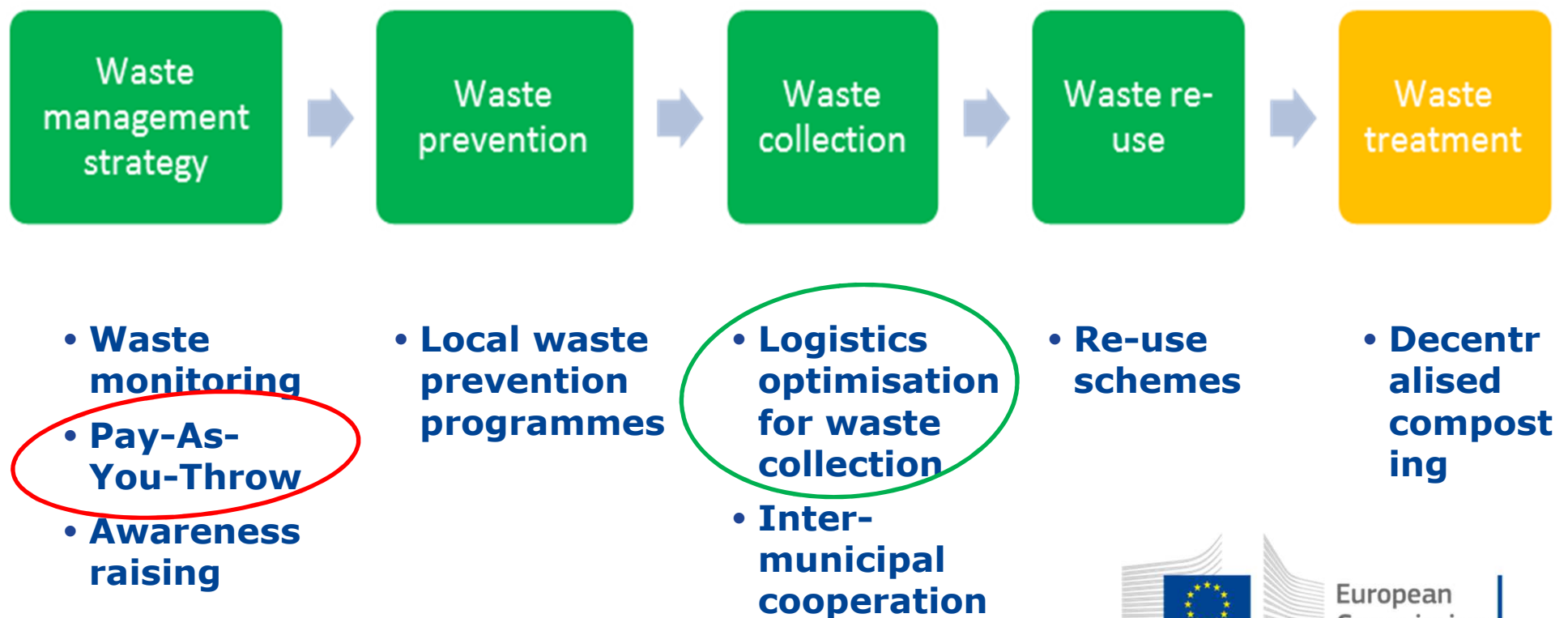
The scope





Currently under development

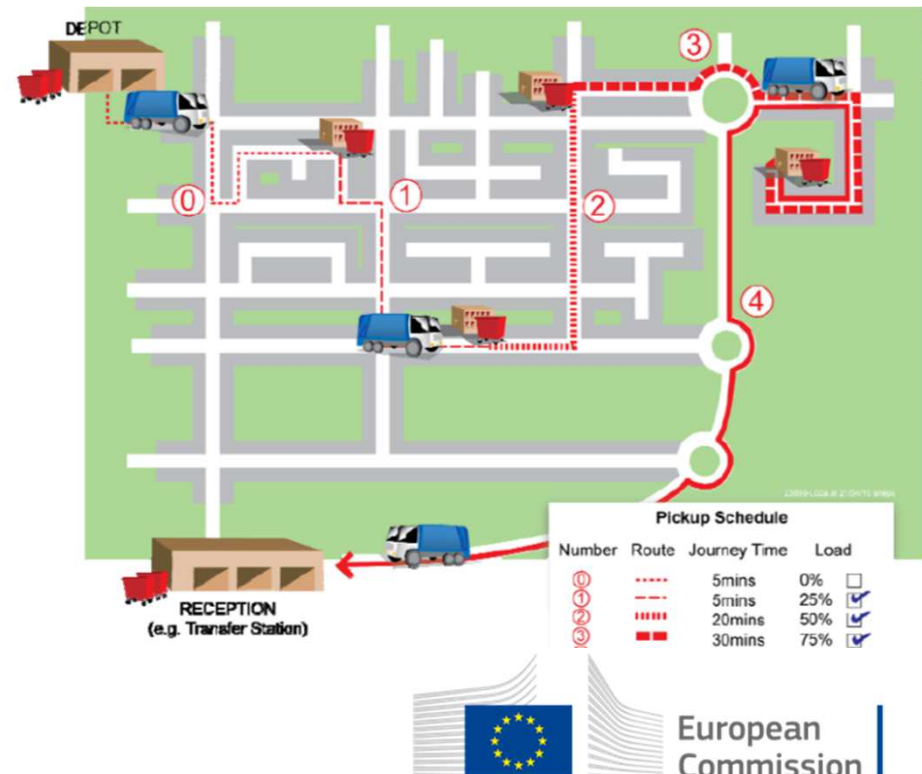
Few examples of BEMPs for **municipal solid waste**





Logistics optimisation for waste collection

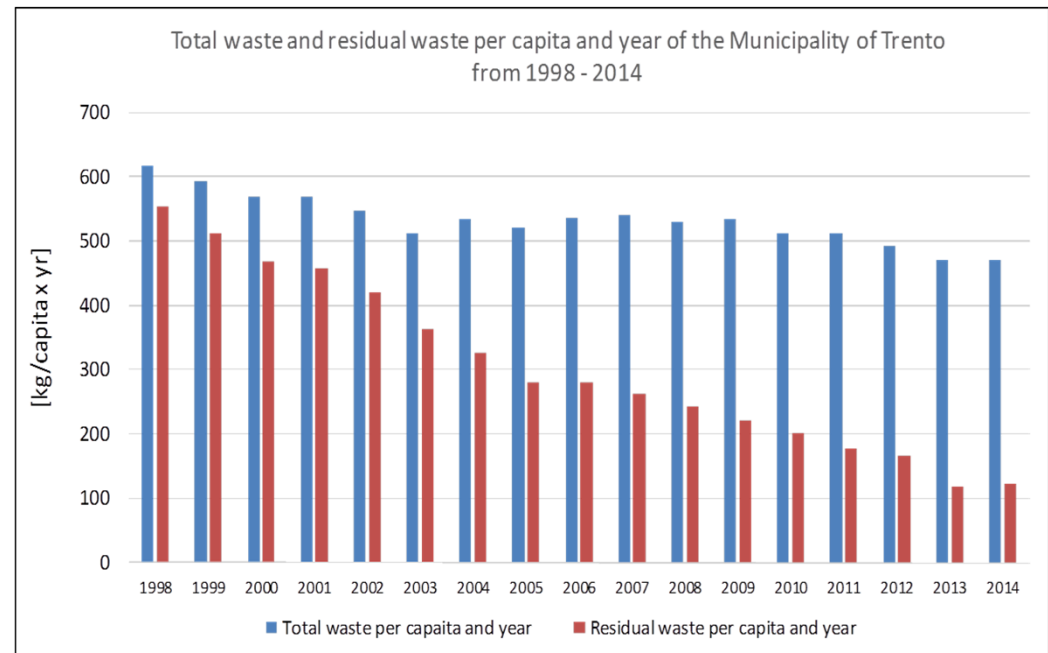
- Logistics operations are optimised using **Computerised Vehicle Routing and Scheduling** (CVRS) technology.
- Environmental metrics** are integrated into optimisation.
- Performance is benchmarked using **appropriate efficiency indicators**, e.g. cumulative energy demand and CO₂e.
- Telematics equipment** installed in collection vehicles, and drivers trained in **eco-driving techniques**.





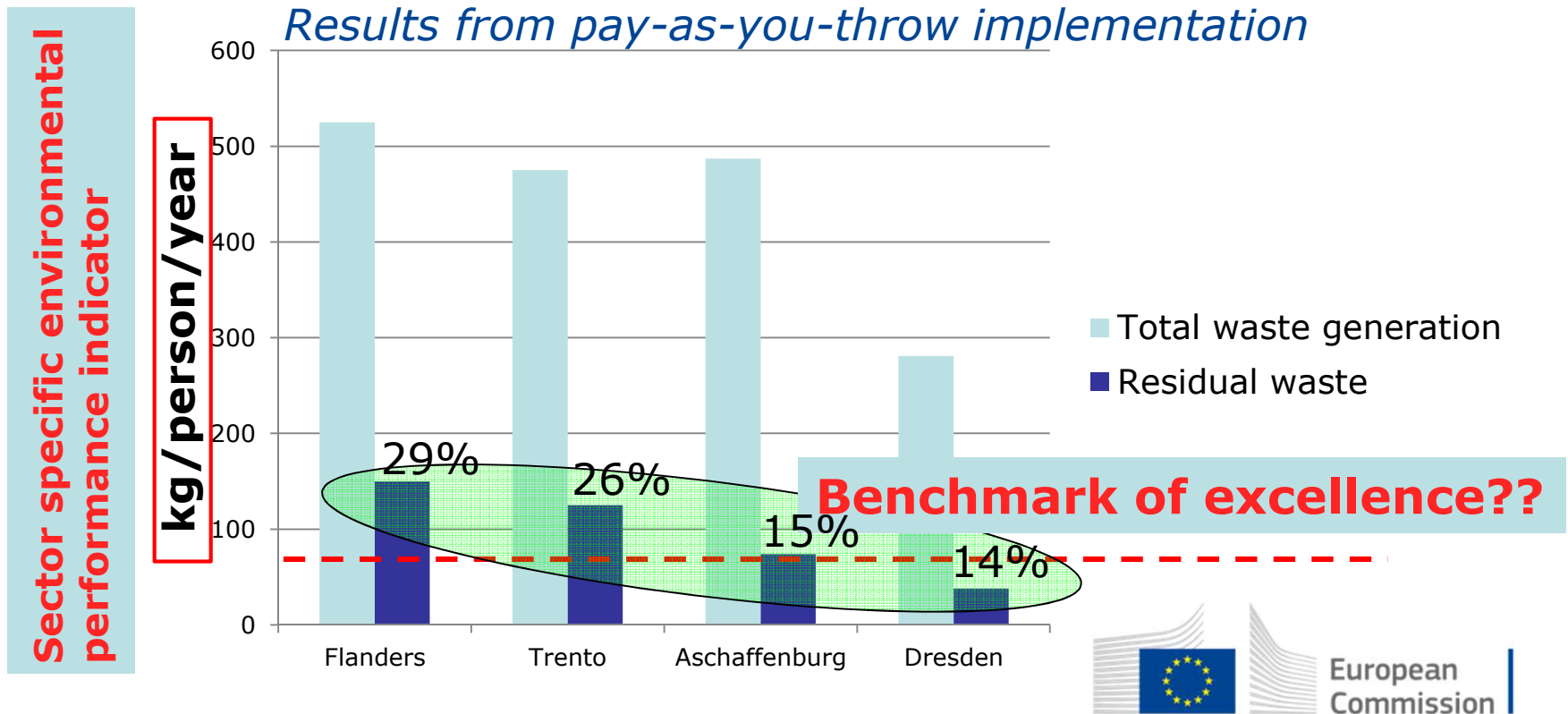
Pay-as-you-throw

- Introduce a system where citizens **pay per weight** or **per bag** of residual waste generated.
- Ensure that **infrastructure to collect and to process the recyclables** is available and efficient.
- **Organic waste** and **bulky waste** are also weighted.



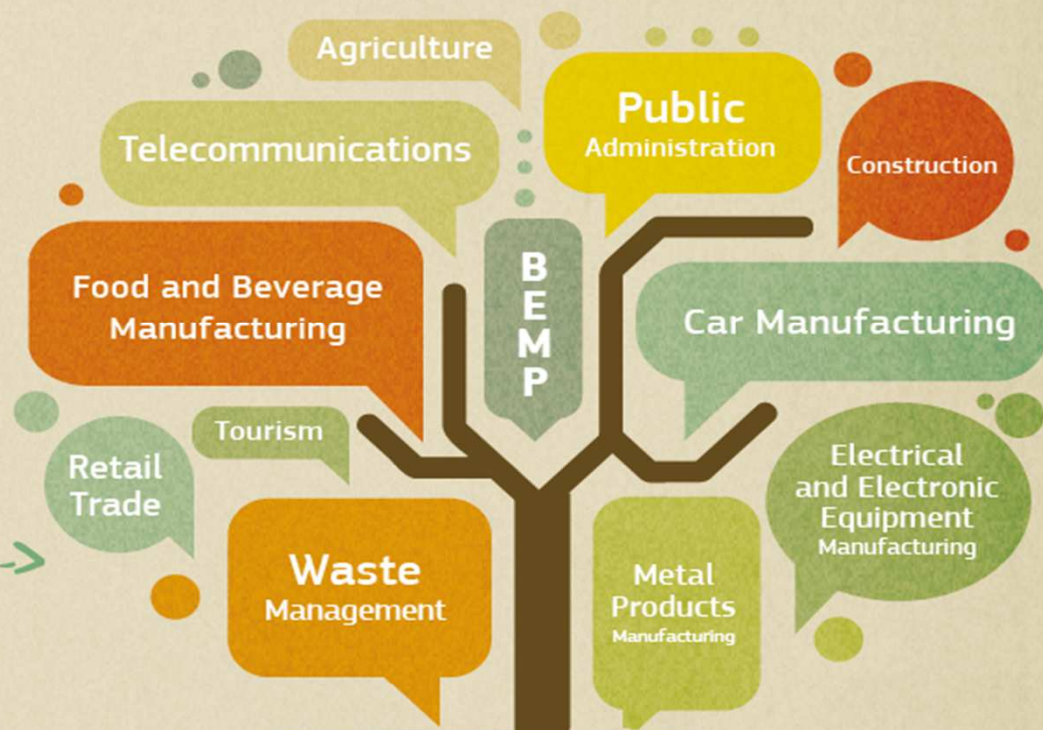


From best practices to indicators and benchmarks



BEMPs for 11 sectors

The European Commission cooperates with experts and stakeholders from different sectors to identify BEMPs. As a result of this cooperation, Sectoral Reference Documents for 11 sectors are currently under development.



WORKING GROUPS

JRC & DG Environment
in close cooperation with





A development process based on stakeholder involvement

Three phases:

- **Desk research** (background collection of information from literature, frontrunner organisations and experts)
- **Information exchange** within the forum of a **Technical Working Group** comprising sector experts to identify and validate the best practices identified, the indicators and the benchmark of excellence
- **Legislative process** (member state representatives in the EMAS Committee)



BEMPs for the Waste Management Sector

The timeline





What's in it for you?

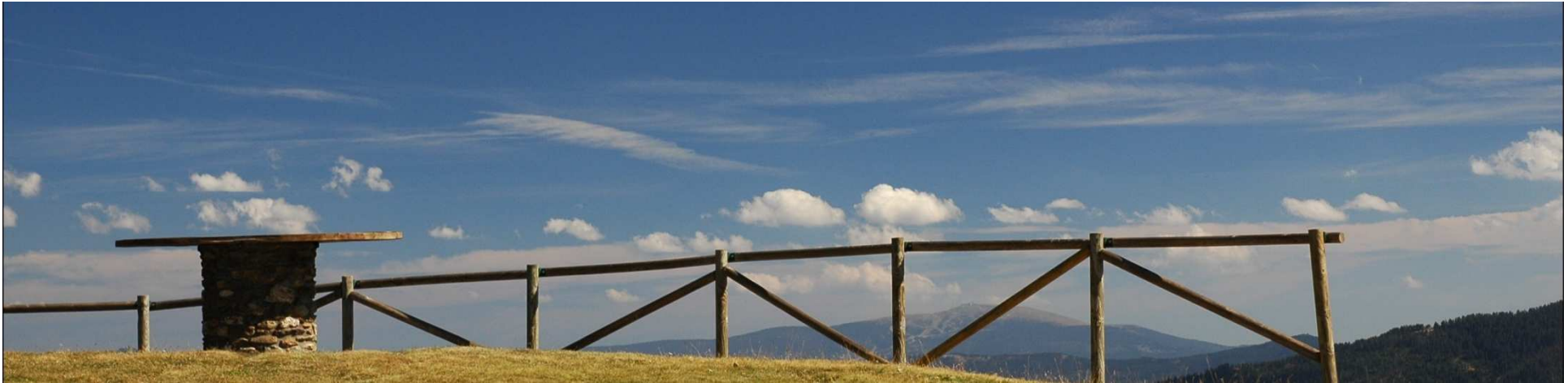
Implementation is voluntary!

- Proven and reliable information on relevant best practices
- Set of environmental performance indicators
- Possibility to benchmark your performance against frontrunners to identify improvement potentials

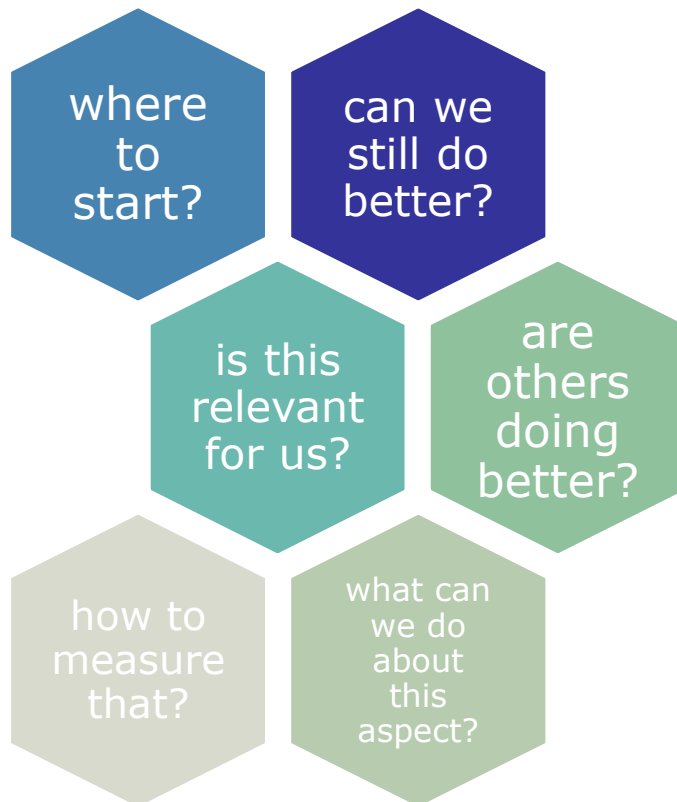


What's in it for you?

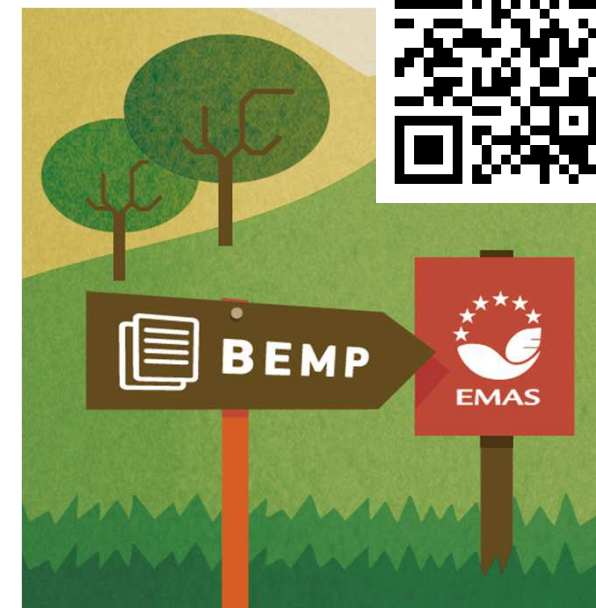
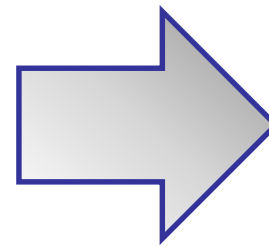
- Information is freely available.
- Costs related to implementation of best practices are duly described to allow investment decisions.
- Information on reference organisations to obtain further information



So... if you are looking for guidance on...



Keep up with the development of BEMPs at:
<http://europa.eu/!xW93Nv>





Thank you!

Paolo Canfora

Marco Dri

Ioannis Antonopoulos

Pierre Gaudillat

European Commission
Joint Research Centre

Institute for Prospective Technological Studies
Sustainable Production and Consumption Unit

Edificio EXPO

C/ Inca Garcilaso, 3; E-41092 Seville

Email: jrc-ipts-emas@ec.europa.eu

<http://susproc.jrc.ec.europa.eu/activities/emas/index.html>

