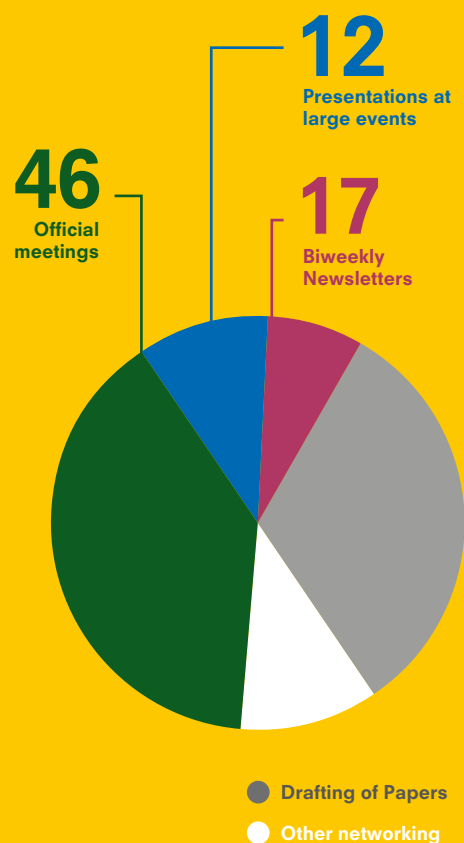




Guidance Documents and Position Papers Adopted in 2016

1. Key points to amend in the Waste Framework and Landfill Directive Proposals
2. Amendments to the Draft Report on the Waste Framework and Landfill Directive
3. Guidance document on the ENVI/ITRE Amendments on the Waste Framework and Landfill Directives
4. Joint MWE-EUROCITES-CEMR Recommendations for the vote in ENVI/ITRE Committee on the Waste Framework and Landfill Directives
5. Guidance Document on the Waste Package Compromise Amendments

Our Time



Our Team



Secretary General, Vanya Veras, a gifted, ethical and transparent communicator with sixteen years of experience in waste management and the EU decision-making process.



Policy and Communications Officer, Konstantinos Malandrinos, holds a Master's in European law and politics, has worked in the European Council and in professional associations in the fields of EU environment, energy and climate change policies. An excellent team player and communicator.

Ethics

MWE is repeatedly praised by our stakeholders for our professionalism, effective communication skills, inclusive style and multi-stakeholder approach which help to bring our discussions to a positive conclusion. These attributes as well as transparency in our communication form the basis of our ethical conduct and our strength.

Negotiated Victories

2016 was a key year in the development of the new waste directives, with strong opinions and interests competing to secure their positions and amendments in Parliament.

The positive results of our advocacy, the publication of MWE position papers and the active communication of our messages and examples to the legislator and stakeholders proved effective as most of our proposals were taken up in the rapporteur's reports and the remainder in the amendments tabled by MEPs across political groups. Our proposals all lead to re-focusing the legislation towards the creation of a circular economy.

MWE successfully communicated the importance of having a clear and unambiguous definition of municipal waste according to nature and composition but not quantity.

- At the close of the year with the Parliament's vote postponed, there was a majority in favour of deleting quantity and Council's draft text had already deleted it.
- Minimum requirements for extended producer responsibility were fully integrated into the Parliament's text
- with full cost coverage while leaving some points still open to debate.

Other elements that MWE had requested and that the Parliament included were:

- a proposal to include commercial and industrial waste by 2018,
- the limitation to one calculation method for recycling,

all crucial to the success of implementation and the achievement of a circular economy.

"Today's conference is part of the real change process that is starting to happen. Conferences like this, with their examples of best practice, can have a powerful knock-on effect."

– Karmena Vella, Commissioner (2014-2019) of Environment, Maritime Affairs & Fisheries at the European Commission

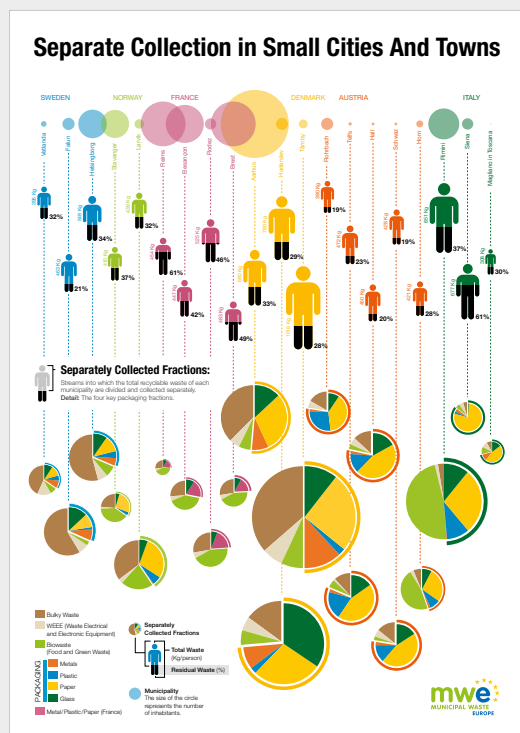
Separate Waste Collection Conference

Separate Waste Collection in the Context of a Circular Economy in Europe

On request by the Commission's Waste Unit, MWE organised a conference with over 300 participants in the Commission's Charlemagne building, on 29 January 2016, with the help of EUROCITIES. The aim of the conference was to present the results of

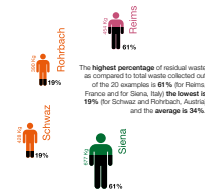
the Commission's study of separate collection in all 28 Capitals, to officially recognise the best performers and thereby promote more separate collection in the EU's municipalities. MWE also presented the results of their study of separate collection in small towns and cities to demonstrate the differences in implementation between large and small municipalities. This was very well received as was the whole conference. The case studies were referred to repeatedly throughout the year. More information and the case studies are available on our website.

Published in 2016:



The Systems Behind Effective Recycling

This brochure represents the results of an empirical study of the separate waste collection systems in a selection of small cities and towns within the Municipal Waste Europe membership. The study looked at 2013 data from 20 municipalities in six European countries: Sweden, Norway, France, Denmark, Austria and Italy with populations ranging from 316,677 (Aarhus) to 3,633 (Magliano in Toscana) inhabitants. The aim of the study was to measure the effectiveness of separate collection schemes in small municipalities. You can see the results depicted in the infographics.



Average collection rates per fraction:

Municipality	Residual Waste	Organic	Glass	Paper	Plastic	Metal
Vetlanda	1/2 weeks	1/2 weeks	—	—	—	—
Fulda	on request	1/2 weeks	—	—	—	—
Helsingborg	1/week or 1/2 weeks	1/week or 1/2 weeks	1/month	1/week or 1/2 weeks	1/month	1/month
Stavanger	1/2 weeks	1/2 weeks	—	1/4 weeks	—	—
Larvik	1/2 weeks	1/week	—	—	1/2 weeks	—
Rimini	3/week	3/week	1/week	1/week	1/week	1/week
Besençon	1/week	1/week	2/month	1/week	1/week	1/week
Norset	2/week	2/week	—	1/week	1/week	1/week
Breda	1/week	1/week	1/week	1/week	1/week	1/week
Aarhus	1/2 weeks	1/week	—	1/month	—	—
Helsinki	1/2 weeks	1/2 weeks	150 year	150 year	150 year	150 year
Sandv	1/week	1/week	—	2/month	—	—
Ruhrbach	1/month	1/month	—	—	—	—
YELPS	1/2 weeks	1/2 weeks (May to Oct) or 1/week	8/year	8/year	8/year	8/year
Hall	1/week	1/week	—	—	—	—
Schwaz	1/2 weeks	1/week	1/month	1/month	1/month	1/month
Horn	1/4 weeks	2/week	—	6/year	1/2 weeks	—
Horn	1/2 weeks	1/2 weeks	1/week	1/week	1/week	1/week
Siena	8/week	3/week	2/week	2/week	2/week	2/week
Magliano in Toscana	1/week	2/week	1/week	1/week	1/week	1/week

Participating MWE Members:



Disclaimer: This benchmarking study by Municipal Waste Europe has been conducted on the basis of empirical data gathered from our members. It is intended to give an order of magnitude and overview of current achievements in the participating small cities and towns as a measure of comparison with large cities and towns. Municipal Waste Europe accepts no duty of care or other liability in respect of the study to any person other than its members nor in respect of any matter outside the scope and limitations of the study.

MWE:

Municipal Waste Europe is the European umbrella association representing public responsibility for waste.



This brochure is designed by:



Printed on certified paper:

