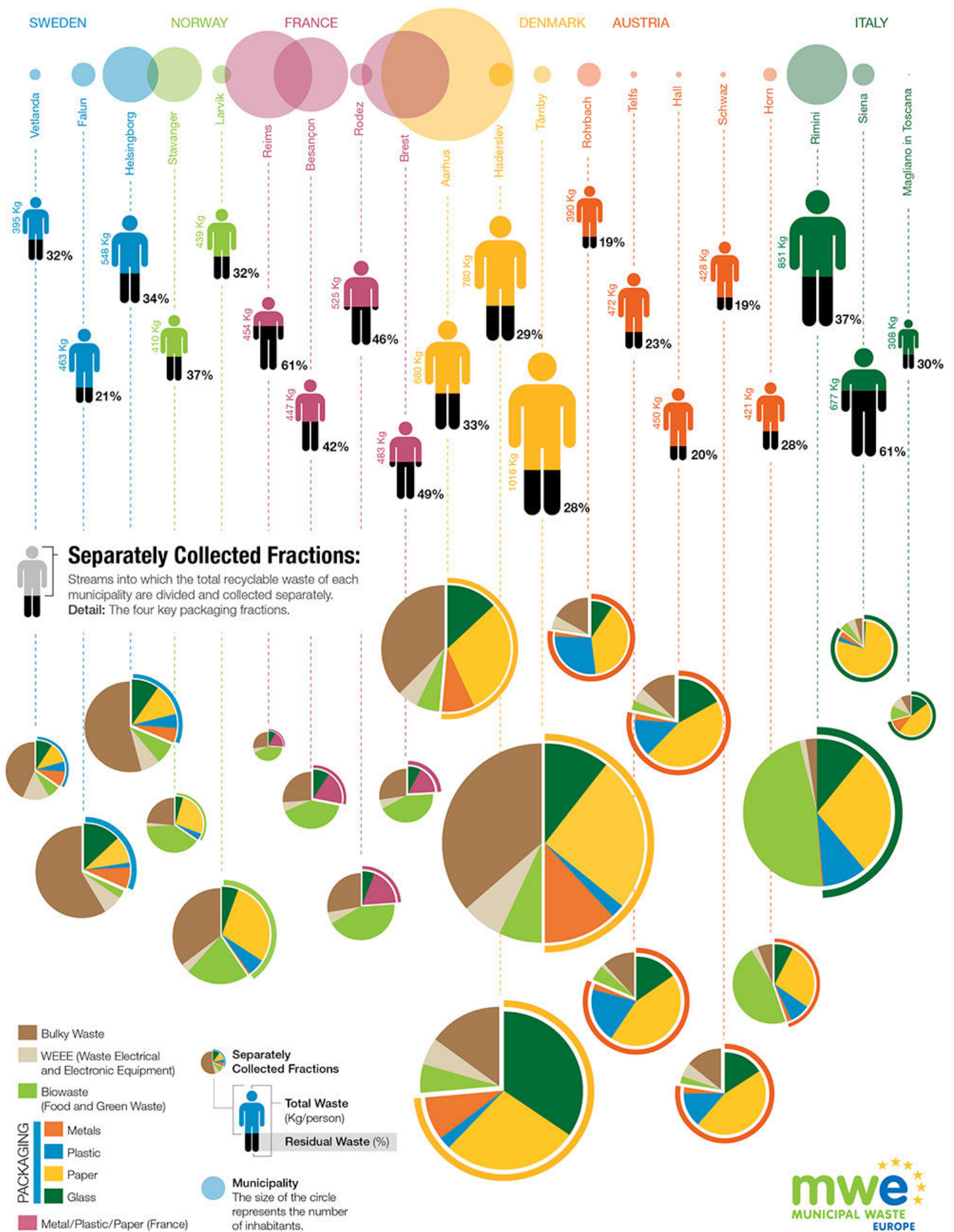
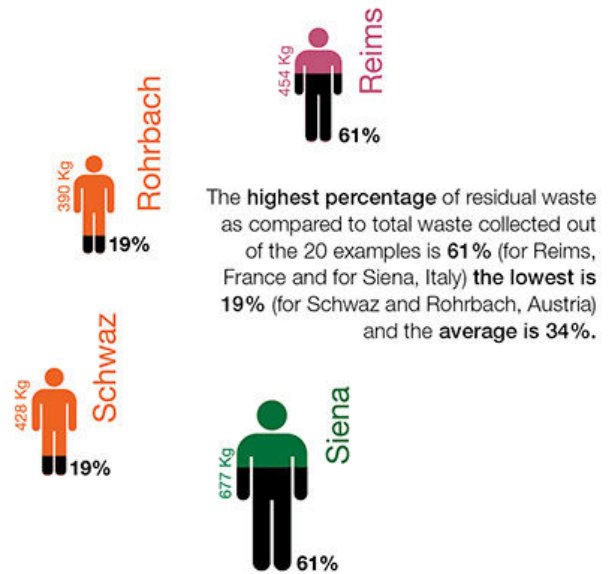


# Separate Collection in Small Cities And Towns



# The Systems Behind Effective Recycling

This brochure represents the results of an empirical study of the separate waste collection systems in a selection of small cities and towns within the Municipal Waste Europe membership. The study looked at 2013 data from 20 municipalities in six European countries: Sweden, Norway, France, Denmark, Austria and Italy with populations ranging from 316,677 (Aarhus) to 3,633 (Magliano in Toscana) inhabitants. The aim of the study was to measure the effectiveness of separate collection schemes in small municipalities. You can see the results depicted in the infographics.



The highest percentage of residual waste as compared to total waste collected out of the 20 examples is **61%** (for Reims, France and for Siena, Italy) the lowest is **19%** (for Schwaz and Rohrbach, Austria) and the **average is 34%**.

## Average collection rates per fraction:

Municipality	Residual Waste	Organic	Glass	Paper	Plastic	Metal
Vetlanda	1/2 weeks	1/2 weeks	-	-	-	-
Falun	on request	1/2 weeks	-	-	-	-
Helsingborg	1/week or 1/2 weeks	1/week or 1/2 weeks	1/month	1/week or 1/2 weeks	1/month	1/month
Stavanger	1/2 week	1/2 week	-	1/4 weeks	-	-
Larvik	1/3 weeks	1/week	-	-	1/3 weeks	-
Reims	3/week	3/week	1/week	1/week	1/week	1/week
Besançon	1/week	1/week	2/month	1/week	1/week	1/week
Rodez	2/week	2/week	-	1/week	1/week	1/week
Brest	1/week	1/week	1/week	1/week	1/week	1/week
Aarhus	1/2 weeks	1/week	-	1/month	-	-
Haderslev	1/2 weeks	1/2 weeks	13/year	13/year	13/year	13/year
Tårnby	1/week	1/week	-	2/month	-	-
Rohrbach	1/month	1/month	-	-	-	-
TELS	1/2 weeks	1/2 weeks (May to Oct.) or 1/week	9/year	9/year	9/year	9/year
Hall	1/week	1/week	-	-	-	-
Schwaz	1/2 weeks	1/week	1/month	1/month	1/month	1/month
Horn	1/4 weeks	2/week	-	6/year	1/3 weeks	-
Rimini	1/week	3/week	1/2 weeks	1/week	1/week	1/week
Siena	6/week	3/week	2/week	2/week	2/week	2/week
Magliano in Toscana	1/week	2/week	1/week	1/week	1/week	1/week

### Participating MWE Members:



Certified paper:



**Disclaimer:** This Benchmarking Study by Municipal Waste Europe has been conducted on the basis of empirical data gathered from our members. It is intended to give an order of magnitude and overview of current achievements in the participating small cities and towns as a measure of comparison with large cities and towns. Municipal Waste Europe accepts no duty of care or other liability in respect of its study to any person other than its members nor in respect of any matter outside the scope and limitations of the study.