



MUNICIPAL WASTE EUROPE

– promoting public responsibility for waste

Invitation to join Municipal Waste Europe during 2011

What is Municipal Waste Europe?

Municipal Waste Europe is the European association representing municipalities responsible for waste management and their publicly owned waste management companies promoting public responsibility for waste management as a service of general interest.

We invite national or regional associations representing public sector waste management to join us to strengthen the European discussion on Public Waste.

How was Municipal Waste Europe started?

Municipal Waste Europe is founded in 2008 with the aim to promote public responsibility for waste and to provide a platform for policy input.

We aim to give municipal waste management a higher profile in Brussels by promoting the joint policy principles towards the EU authorities and others. The association also encourages the exchange of information among network members as well as sharing success stories involving local and regional systems.

What is the aim of Municipal Waste Europe?

Waste management services are a crucial aspect of the social responsibility for the environment and public health in Europe. The collective waste management infrastructure, including collection and treatment systems, is best developed through national, regional and local planning. Municipal Waste Europe promotes waste management as a service of general interest. Public sectors participation on the market is also important in order to provide the most competition and diversity between operators.

Key dossiers and positions

The work of Municipal Waste Europe is carried through selected Policy dossiers, covering Services of General interest, public procurement, public procurement and the development of end-of-waste criteria for specific waste streams. The internal Policy Committee continuously develops the Policy Dossiers.

Please contact the secretariat for your updated list of current Policy Dossiers.

Can I become member?

The members of Municipal Waste Europe are all national or regional associations representing municipal waste responsibility within Member States of the European Union (EU) or regional associations for countries in which environmental policy is a competence of regional authorities, European Union accession candidate countries and Member of the European Free Trade Area (EFTA).

The members all represent public/private entities with a clear public majority of one country supporting the objective of Municipal Waste Europe.

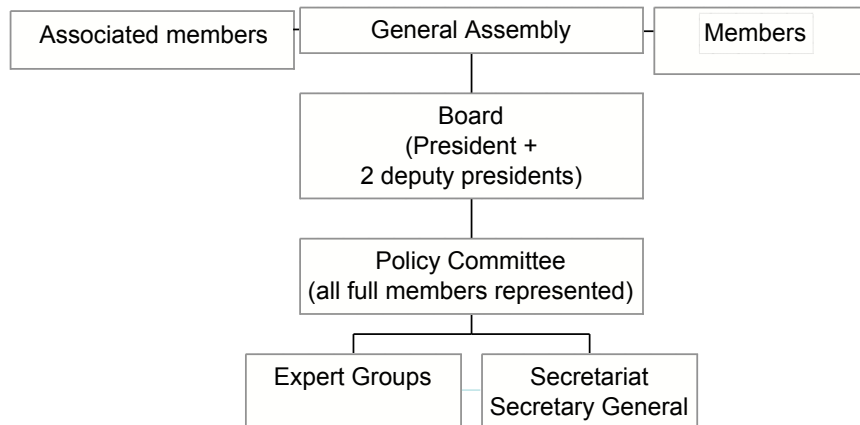
The current members are:

 Österreichischer Städtebund	 Samband íslenskra sveitarfélaga, Iceland
 Interafval, Flanders, Belgium	 Federambiente, Italy
 RenoSam, Denmark	 NVRD, the Netherlands
 JLY, Jätelaitosyhdistys, Finland	 Avfall Norge, Norway
 VKSimVKU, Germany	 Avfall Sverige, Sweden
 LARAC, United Kingdom	 EGSRA, Portugal

If you fulfil the conditions to become a member, we welcome you as a member!
The more national and regional associations joining the stronger our voice becomes and we can share the cost and burden being represented in Brussels.

All unable to join as full member, are welcome to apply for an associated membership.

How is Municipal Waste Europe organized?



All full members are represented in both the General Assembly and in the Policy Committee. All members are welcome to join all active Expert Groups, which are established thematic and with current issues assigned to them.

Further information about the formal structure of Municipal Waste Europe can be found in our statutes, available in English and in French on www.municipalwasteurope.eu.

The secretariat welcomes posted workers from the member associations to join our daily work for shorter or longer periods of time.

What do I get from Municipal Waste Europe?

The Municipal Waste Europe website, Intranet provides updated information to members on all relevant current issues on the European arena.

All information is summarised and sent in weekly updates.

Municipal Waste Europe will notify you when there are available expert groups, working groups, technical adaptation groups, workshops, meetings, conferences and other arenas available for European influence and information.

The secretariat will provide attentive membership service with personal attention.

You will join other public waste management associations for networking, information sharing and strengthening influencing power towards the European Institutions.

How much?

Members share the burden of the cost of the secretariat by dividing the budget between the members associations based on the size of the respective country. The membership fees and contributions are established at the Annual General Assembly.

Joining members are offered to pay increasing contributions over three years to reach the full membership fee, generally in a progression of half, 2/3 and then full membership fee.

Associated members contribute to the association with an annual, flat fee of €5000. Associated members are associations who cannot be accepted as members.

For more information

For more information please see: www.municipalwasteeurope.eu

You are welcome to contact any of the present members for more information about the work of Municipal Waste Europe.

Kind regards,

Erik De Baedts,
President, Municipal Waste Europe / Director, NVRD, the Netherlands
president@municipalwasteeurope.eu

You are also welcome to contact Secretary General Gunnel Klingberg
Office: +32 2 229 2145, Mobile: +32 478 012532
Email: gunnel.klingberg@municipalwasteeurope.eu

Post address:
Municipal Waste Europe, Rue des deux Eglises 26 bt 5, BE- 1000 Brussels, Belgium